

Better Life & Best Security

TrustOne

www.trustone.co.kr



Biometrics Face Controller

CREATIVE & INNOVATIVE **TRUSTONE** GLOBAL

TrustOne has been carrying out all our business activities following our management Philosophy of contributing to the improvement of the lives of people and progress in society, and has been providing a wide range of products in the security field related to our daily lives.

In order to fulfill this commitment, in January 2011, the TrustOne announced its aim of becoming the No.1 security innovation company in the biometrics access control and time & attendance industry.

Our design and development and quality departments can directly communicate with customers, giving faster and accurate reaction time and better quality products.

TrustOne has developed a number of products including a variety of fingerprint and face device in order for companies in worldwide to comply with various types of project demand, and who always being our faithful customers due to our competitive prices, excellent quality, fast delivery and consistent services.

This total solutions we provide to our clients in the security business proved to be a fast, accurate and commercially usable biometric technology, combined with convenience, affordability, and improved security.

FE-500



FE-500S



FE-500L



FE-500 Series

- Adapting the AI technology which makes it possible to be upgraded continuously.
- Face device can increase recognition rate by reflecting users' even minor & recent facial changes.
- Compared with registered face, face device updates changed face shortly.

FE-500

FACE CONTROLLER



Face + Mask
Detection



Speed <1s
(50K 1:N mode)



Multi face verif ication
(up to 5 people)

FE-500 Specification

CPU	2 core CPU
Memory	4GB RAM, 8G Flash
LCD	5 inch IPS Touch screen
Camera	2MP dual-lens
No. of user Registration	50K user capacitor / 1,000K Event log
OS	Linux
Function	Face + Mask detection
Power	12V/2A(Max.24W)
Detection	Single/Multi (Up to 5 person)
Range	Max 3M
Live detection	Picture, Video, Mask can be detected
QR code	YES
Communication	TCP/ WIFI(Optional)
Speed	<1s(1:N, 50k)
RF card	MIFARE/EM/HID
Temperature	-10 – 50℃
Humidity	10% - 90%
Size	192mm×92mm×30mm

99.77%

Recognition Rate

99.77% recognition rate at 1% FAR
99.27% recognition rate at 0.1% FAR

2-3M

Recognition Distance

Long range detection

1 sec

Less than 1sec

(for 50K user for 1: N authentication)

Live

Photo detection
Video detection
Face + Mask detection

Multi

Possible to authenticate 3-5 people
simultaneously within 1sec

AI

Through AI technology that
enables continuous learning,
the recognition rate is increased
by reflecting recent changes in
the user's face.

QR code

Support QR code reader functions

FE-500L

FACE CONTROLLER



Face + Mask
Detection



Speed <1s
(3K1:N mode)



Multi face verification
(up to 3 people)





FE-500L Specification

CPU	2 core CPU
Memory	1GB RAM, 4G Flash
LCD	5 inch Touch screen
Camera	1MP dual-lens
No. of user Registration	3K user capacitor / 100K Event log
OS	Linux
Function	Face + Mask detection
Power	12V/2A(Max.24W)
Detection	Single/Multi (Up to 3 person)
Range	2-3M
Live detection	Picture, Video can be detected
QR code	YES
Communication	TCP/ WIFI(Optional)
Speed	<1s(1:N, 3k)
RF card	MIFARE
Temperature	-10 – 50℃
Humidity	10% - 90%
Size	165mm×92mm×30mm

FE-500S

FACE CONTROLLER



-  Omron Thermal Sensor
-  Face + Temperature value + Mask detection
-  Speed <1s (50K 1:N mode)
-  Multi face verification (up to 5 people)

FE-500S Specification

CPU	2 core CPU
Memory	4GB RAM, 8G Flash
LCD	5 inch IPS Touch screen
Camera	2MP dual-lens
No. of user Registration	50K user capacitor / 1,000K Event log
OS	Linux
Function	Face + Temperature + Mask detection
Power	12V/2A(Max.24W)
Detection	Single/Multi (Up to 5 person)
Range	Max 3M. For temperature 50cm
Live detection	Picture, Video, Mask can be detected
QR code	YES
Communication	TCP/ WIFI(Optional)
Speed	<1s(1:N, 50k)
RF card	MIFARE
Temperature	-10 – 50°C
Humidity	10% - 90%
Size	192mm×92mm×30mm

Thermal Sensor Specification

Type	Thermal sensor
Frame Rate	12fps
Temperature Accuracy	±0.3°C
Temperature Distance	0.2M-0.6M
FOV(H*V)	33×33
Control	I2C
Scan range temperature	10°C – 60°C
Focal length	5mm
Humidity	10% - 90%
Power	DC5V

Sensor

Temperature Measurement

Face + Temperature + Mask detection

99.77%

Recognition Rate

99.77% recognition rate at 1% FAR
99.27% recognition rate at 0.1% FAR

1 sec

Less than 1sec
(for 50K user for 1: N authentication)
Possible to authenticate 3-5 people simultaneously within 1sec

Biometrics Fingerprint Controller



TSG-550



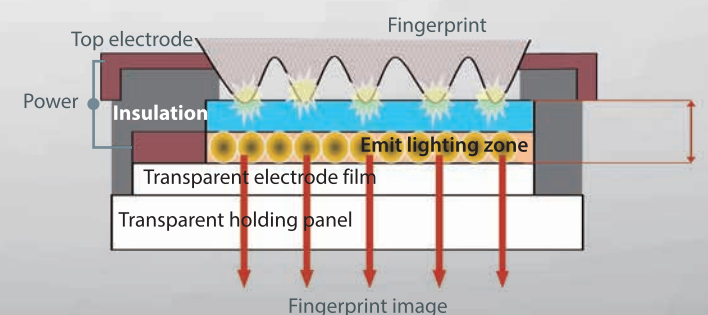
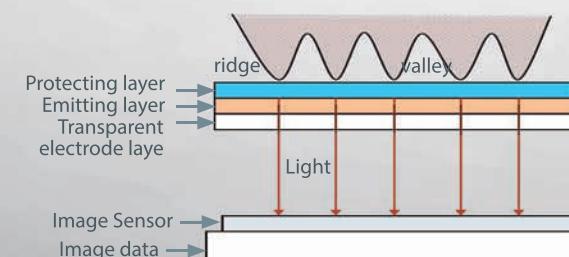
TSG-750

| LE(Light Emitting) sensor?

It is a Polymer based sensor that emits light when fingerprint is contacted.

It is designed for demanding environments where users are exposed to bright sunlight, dusty, dirty and dry combinations. there is also a function of fake fingerprint detection technology.

| Robust LE sensor(US-origin & FBI Certified) Possible to authenticate damaged & fake fingerprint



TSG-550

FINGERPRINT CONTROLLER

Our revolutionary LE Sensor is designed for demanding environments, where users are exposed to dusty, dirty and dry conditions. Employees with challenging fingerprints caused from age, exposure to harsh chemicals or damage can be indentified using LE Sensor.

TSG 550 model is engineered and designed for the highest level of performance in access control, security time & attendance and workforce management.

- Revolutionary Light Emitting Sensor selection(LES)
- Easy Installation and User Friendly Managerment
- High Definition Color Display
- Various Access Control Function



Product Features



Superior Spoof Detection



Fast and accurate user authentication



Perform well in bright sunlight and harsh environmental conditions such as dusty, dirty and dry



Scratch resistance



Possible to authenticate damaged/dry fingerprint

TSG-550 Specification

CPU	32bit
Function	Access control & TA
Memory	Up to 1G Flash, RAM
Display	2.8inch
Sensor	LE Sensor
User capacity	10K, 30K, 50K(1:N)
Camera	-
Event Log	500K Events
Network	TCP, RS485
Wifi	Option
Relay	2(door/alarm)
POE	Yes
RF Card	EM/HID/Mifare
Wiegand Input	Yes
Wiegand Output	26/36bit
Function key	F1, F2, F3, F4
Product Size	118mm×163mm×40mm
Power	12V
Language	English/Arabic/Persian

TSG-750

FINGERPRINT CONTROLLER

TSG 750 performs where others fail, even in bright sunlight, dusty, dirty and dry conditions. User authentication is fast and accurate with the highest level of spoofing detection.

Reliability, security accuracy, performance, speed and style in one easy to use affordable solution.

- Revolutionary Light Emitting Sensor selection(LES)
- Easy Installation and User Friendly Management
- High Definition Color Display
- Various Access Control Function



Product Features



Superior Spoof Detection



Fast and accurate user authentication



Perform well in bright sunlight and harsh environmental conditions such as dusty, dirty and dry



Scratch resistance



Possible to authenticate damaged/dry fingerprint

TSG-750 Specification

CPU	32bit
Function	Access control & TA
Memory	Up to 1G Flash, RAM
Display	4.3inch(Touch)
Sensor	LE Sensor
User capacity	10K, 30K, 50K(1:N)
Camera	Yes(Capture)
Event Log	500K Events
Network	TCP, RS485
Wifi	Option
Relay	2(door/alarm)
POE	Yes
RF Card	EM/HID/Mifare
Wiegand Input	Yes
Wiegand Output	26/36bit
Function key	F1, F2, F3, F4
Product Size	118mm×163mm×40mm
Power	12V
Language	English/Arabic/Persian

TSG-250PC

CARD CONTROLLER



Easy Installation and User Friendly Management



High-Definition Color Display



Various Access Control and Time & Attendance

TSG-250PC Specification

CPU	32bit RISC
RF Card	EM/MIFARE/HID ICLASS
LCD	1.8" Color LCD
LED	Red/Green/Blue
Button	4 function buttons + 12 numeric buttons
Communication	TCP/IP, RS485
USB	YES
Input	EXIT, Door Contact/External Reader
Output	2 Relays (Door/ Alarm)
Voice Output	Voice message
User Registration	1,000 users
Access Events	100,000 events
Anti-passback	Yes
Size	60mmx165mmx40mm



Easy Installation and User Friendly Management



High-Definition Color Display



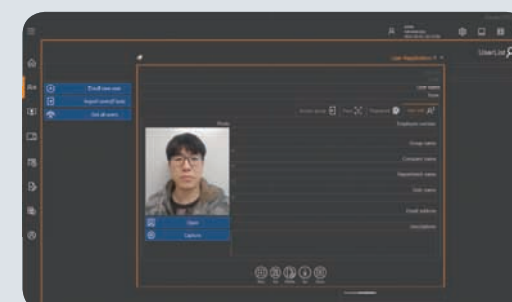
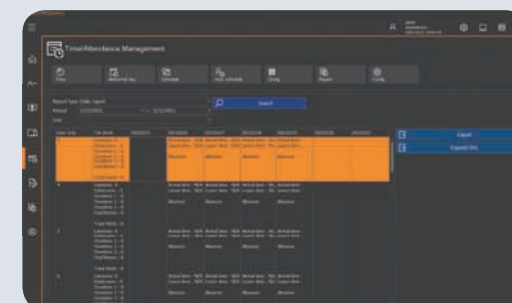
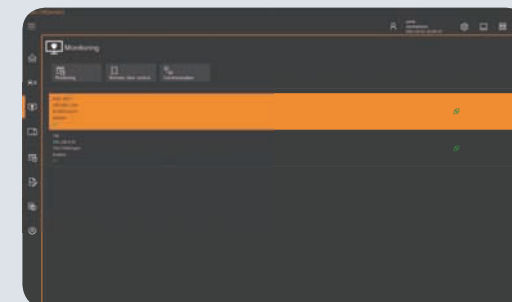
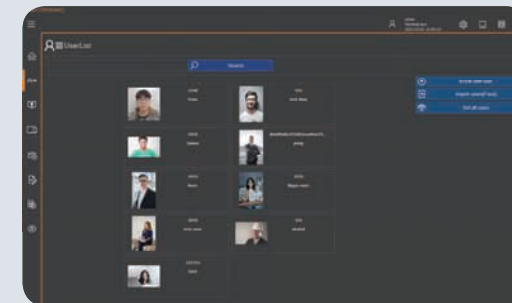
Various Access Control and Time & Attendance

TSG-550PC Specification

CPU	32bit ARM
RF Card	EM/MIFARE/HID ICLASS
Memory	64M Flash, 64M RAM
Display	2.8 TFT Color LCD
10KEY	Touch Keypad
User Registration	10K users
Event Log	500K Events
Network	TCP/IP, RS485
WIFI	Yes (option)
USB	SD Memory card
Voice Output	Yes
Power	12V
humidity	20% ~ 80%
Temperature	-10 ~ 60°C
Size	118mmx163mmx40mm

TSG-550PC

CARD CONTROLLER



Gauss Software

(Access control & Time attendance)

Key Features

Database	Microsoft LocalDB(for small scale site) Microsoft MS-SQL Server(for medium and large scale site)
Server/Client	Gauss Lite(Not support) Gauss Pro(Not support) Gauss Commander(Support)
Dashboard	Support graphical dashboard and user can monitoring at-a glance views of key performance.
Access Control	Support access control and user can control doors and monitoring events and alarms
Time & Attendance	Support regular / shift time and attendance function. Easy to define working time and schedule for each employee and data calculation.
Fingerprint Registration	Possible to register fingerprint by fingerprint USB scanner then upload user templates to other fingerprint devices.
Face Registration	Possible to register face templates even with snap shot taken by web cam on computer. Support mass face registration using user's photos.
Monitoring	Support event and alarm monitoring with user's photo. Support pop-up window when user's temperature high.
Data Export	Support data export to an excel file when views log report.
Account Management	Support account management for Gauss software login.
Remote Door Control	Support remote door control and user can lock/unlock doors.
Multilanguage	English, Korean, Persian and more Support RTL(Right To Left) user interface

Software Comparison Table

	Gauss Lite	Gauss Pro	Gauss Commander
No. of maximum support devices.	5	20	100
Database	Microsoft LocalDB	Microsoft LocalDB	Microsoft MS-SQL Server
Server/Client	Not Support	Not Support	Support
Cost	Free	Not free	Not free



Better Life & Best Security

TRUSTONE Global Co., LTD

2, World cup-ro 345beon-gil, Paldal-gu, Suwon-si, Gyeonggi-do, Republic of Korea
TEL : +82 70 - 8630 - 3015 MAIL : trust1@trustone.co.kr www.trustone.co.kr